

ATWATER

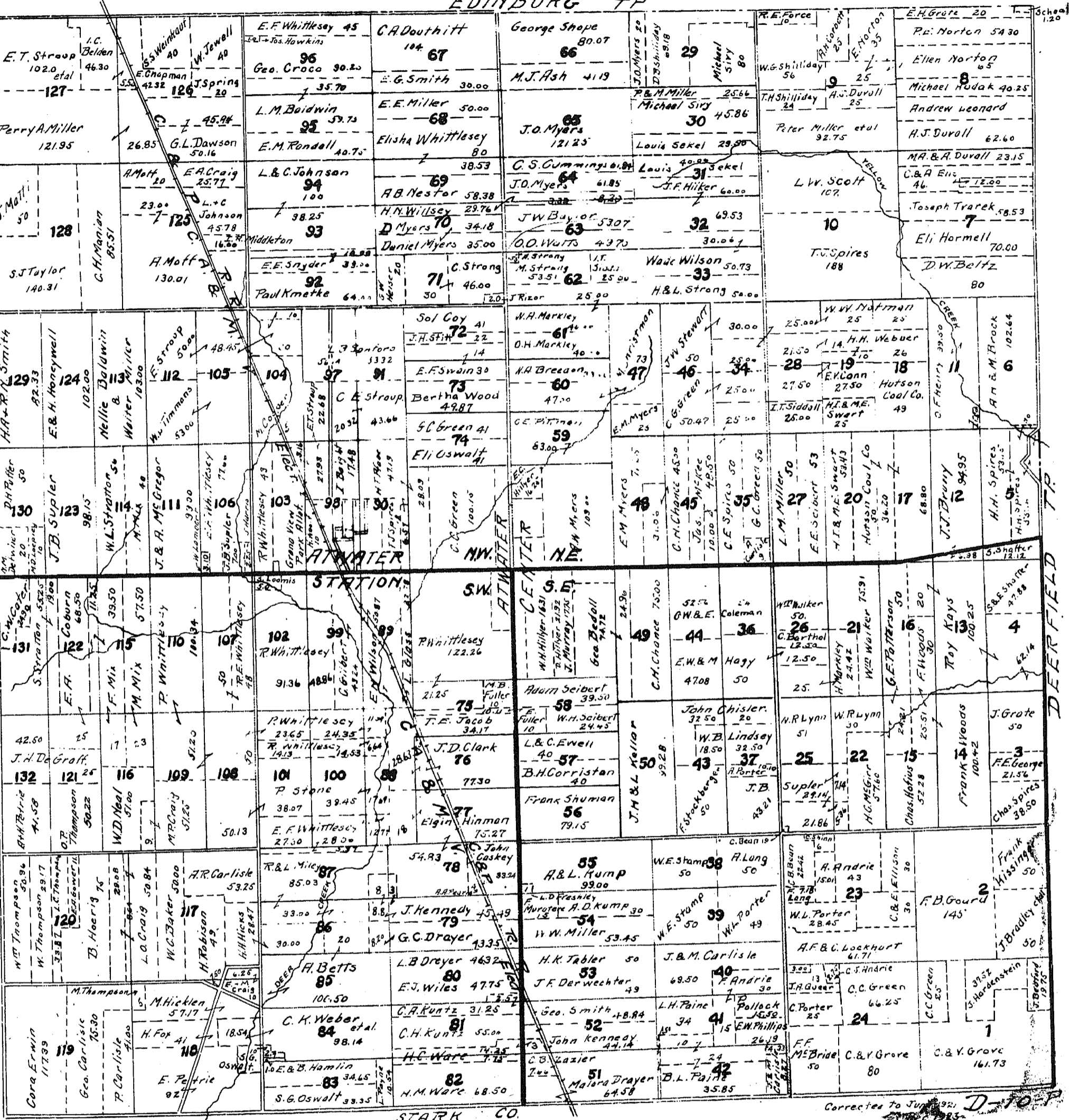
1924
PORTAGE COUNTY
PLAT BOOK

T1N R7W

2 1/2" = 1 mile

R.O. WHITACRE
SURVEYOR RAVENNA.

EDINBURG TP

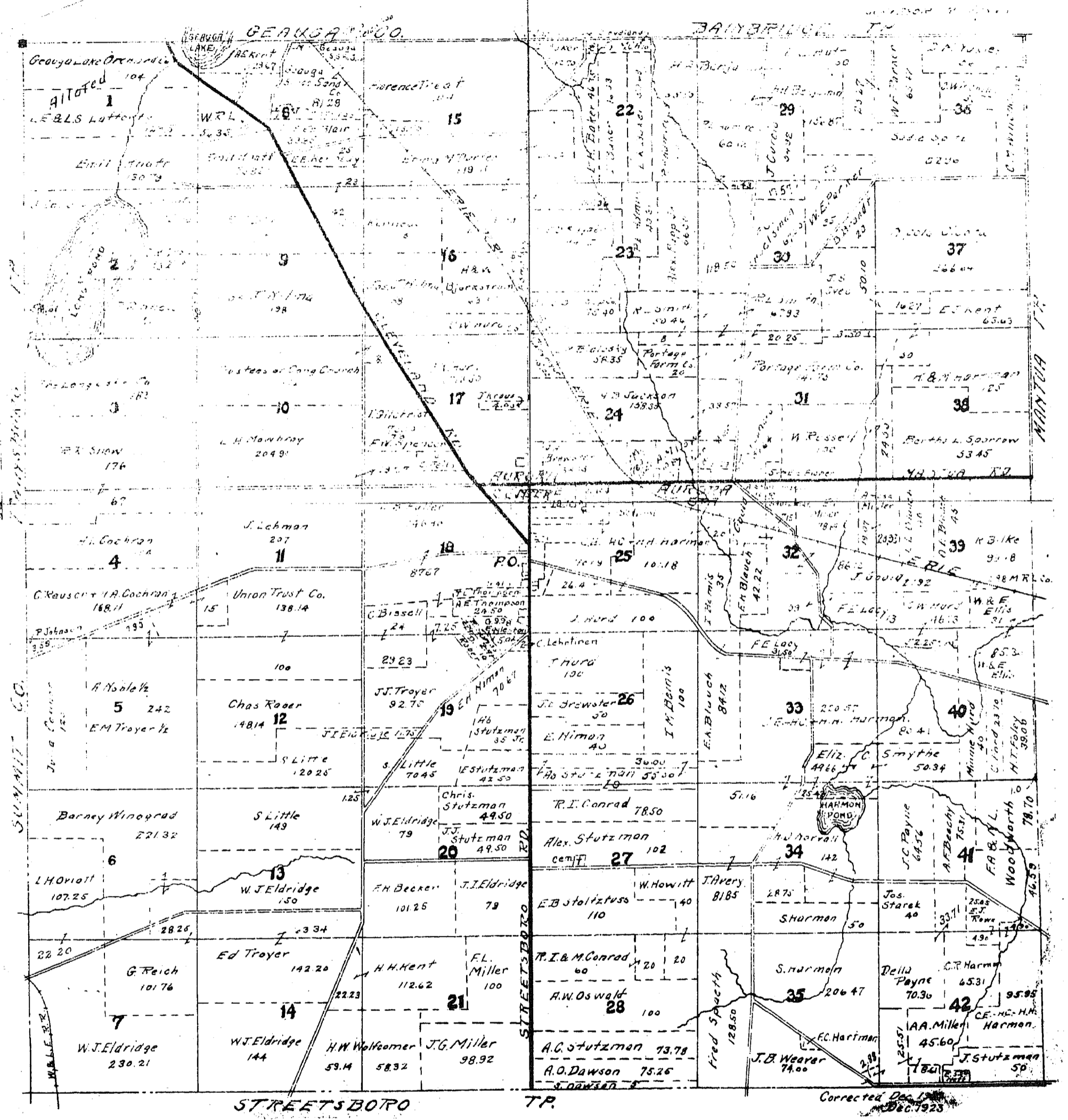


COURTESY OF
JOHN B. WANCHICK
RAVENNA, OHIO

Corrected to June 1921
D-70-P

AURORA

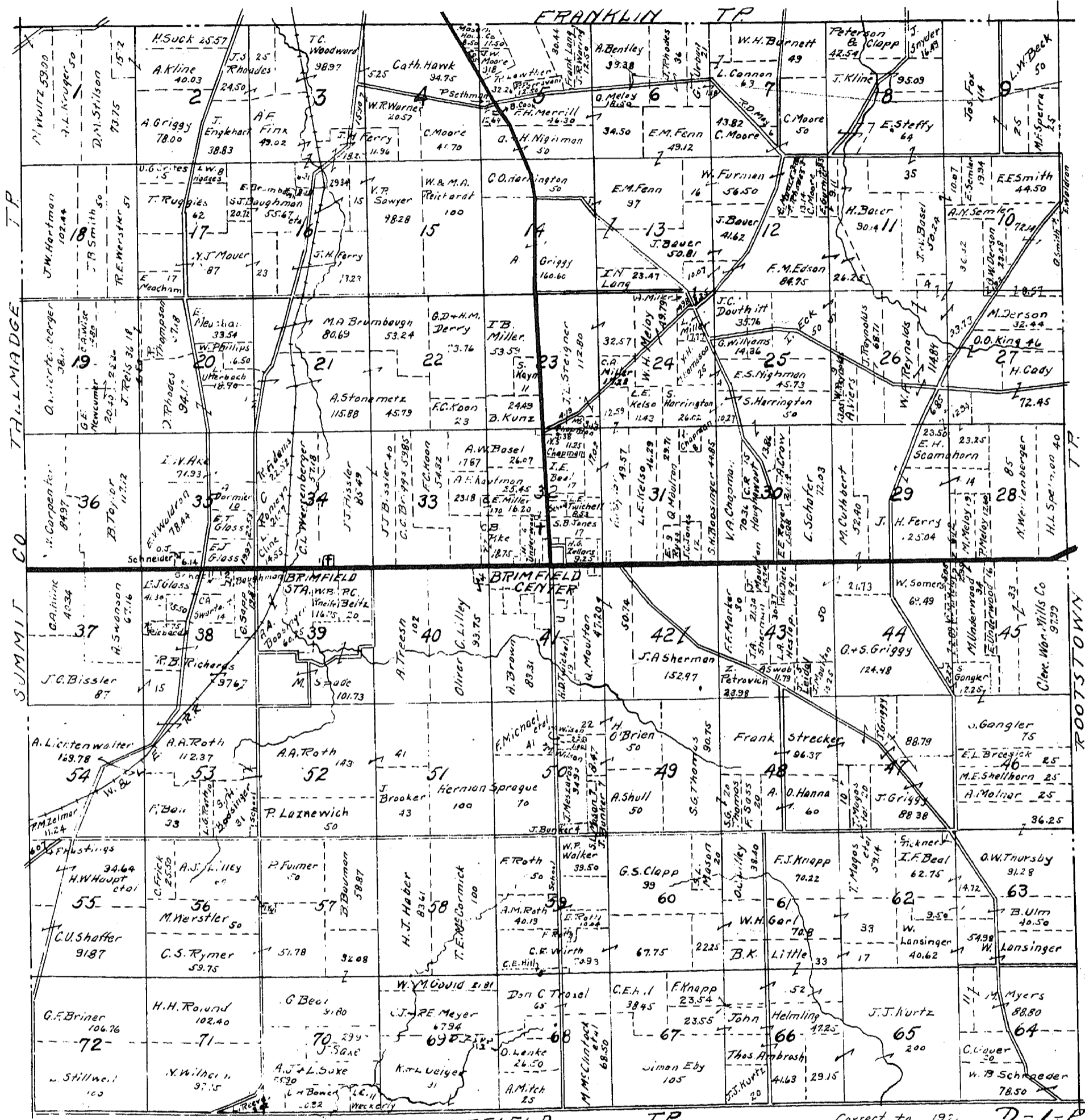
T5N R9W



BRIMFIELD

T2N R9W

R.O. WHITTICRE
SURVEYOR RAVENNA.



SUFFIELD TWP

TR

Correct to 1921
Feb. 1924

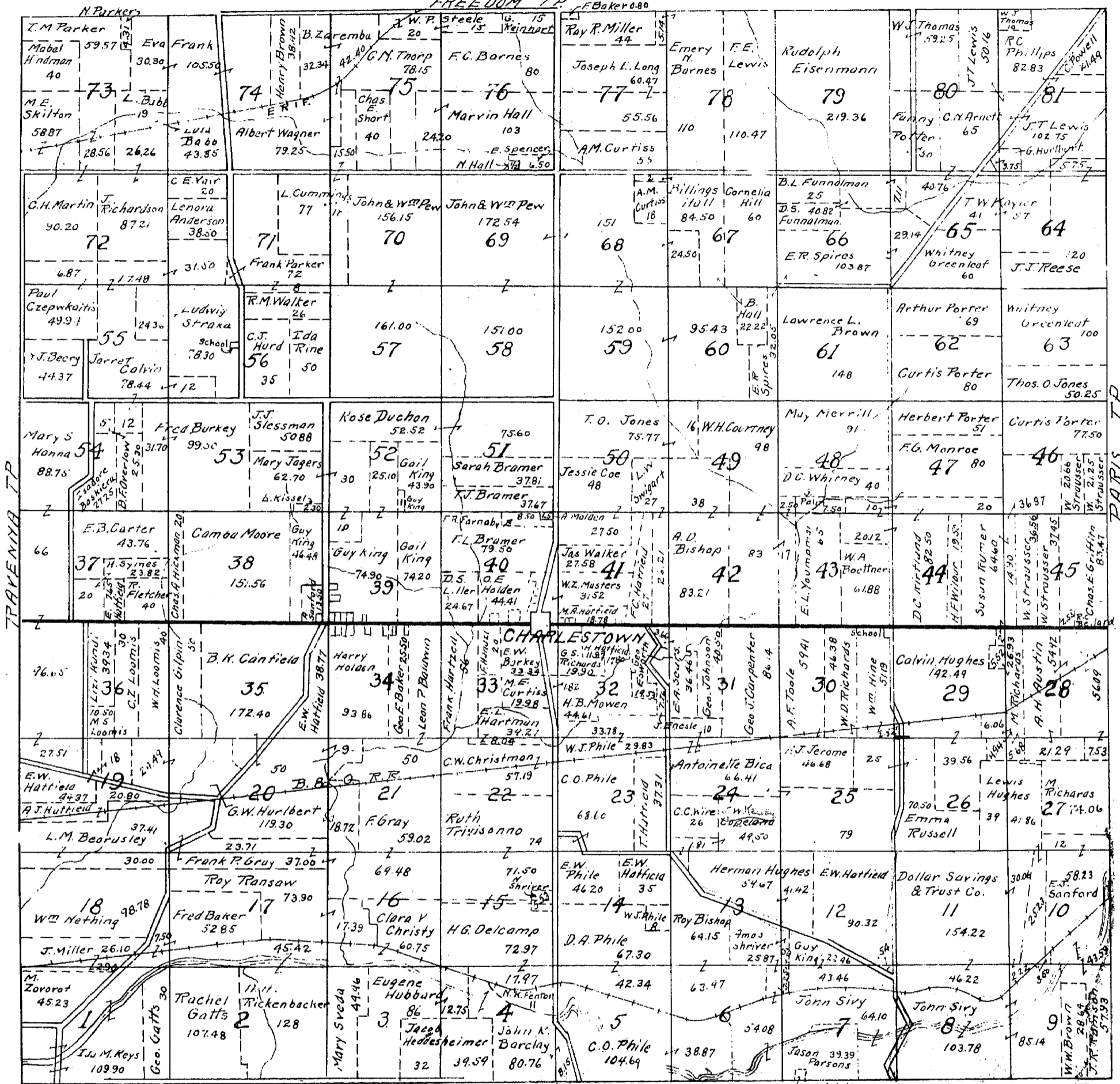
D-1-P

CHARLESTOWN.

T3N. R7W.

R.O. WHITACRE
SURVEYOR - TRAVENNA, O.

FREEDOM TP. F.Baker 0.80



EDINBURG TP.

Corrected to 7/1 1922
Dec 1925

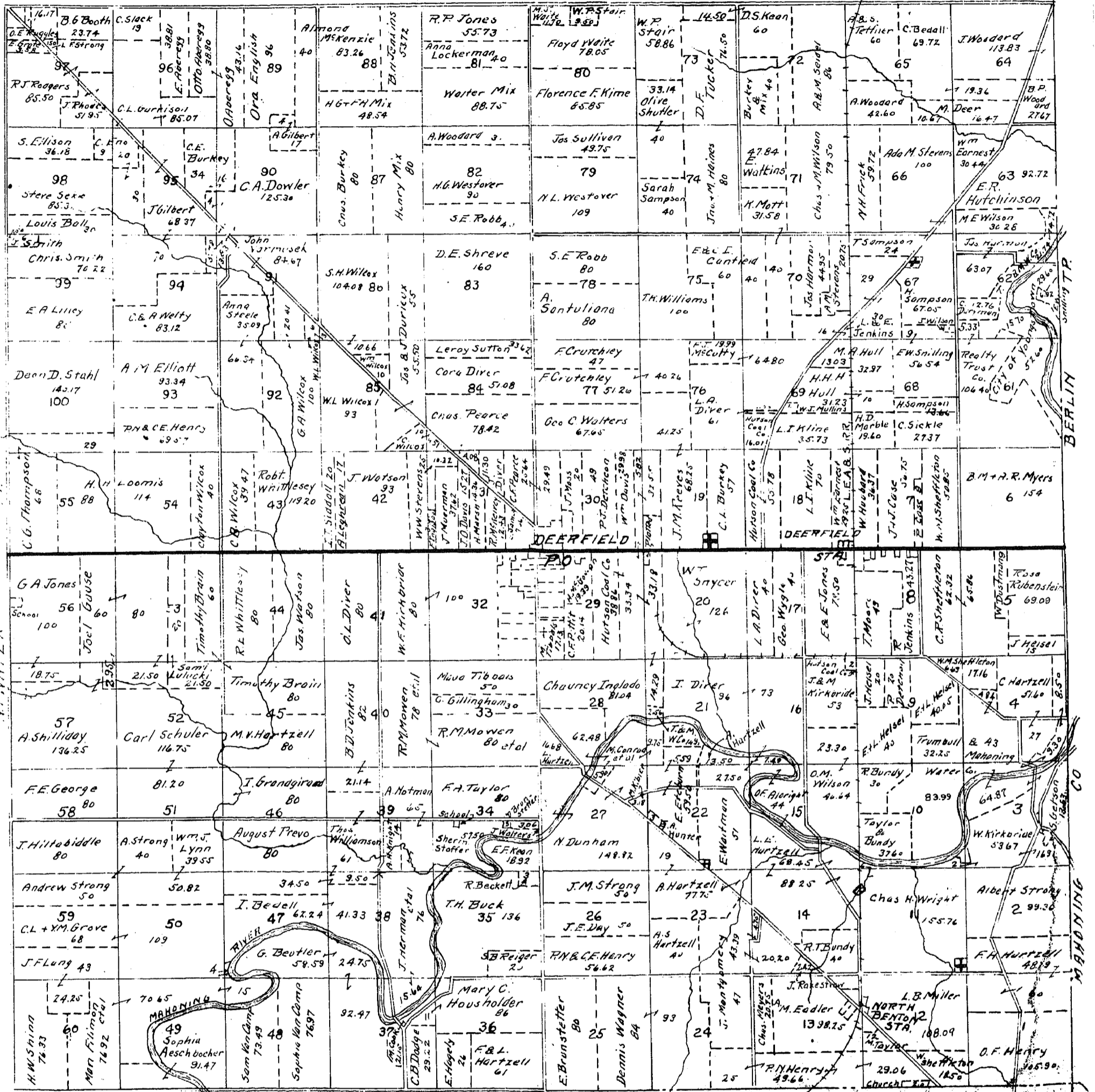
DEERFIELD

T 1 N R 6 W

R.O. WHITAKE
SURVEYOR RAVENNA

PALMYRA

T.P.



DEERFIELD

BERLIN

MAHONING CO

SMITH

MAHONING

MAHONING CO

SMITH

T.P. CORNELL D-15-P

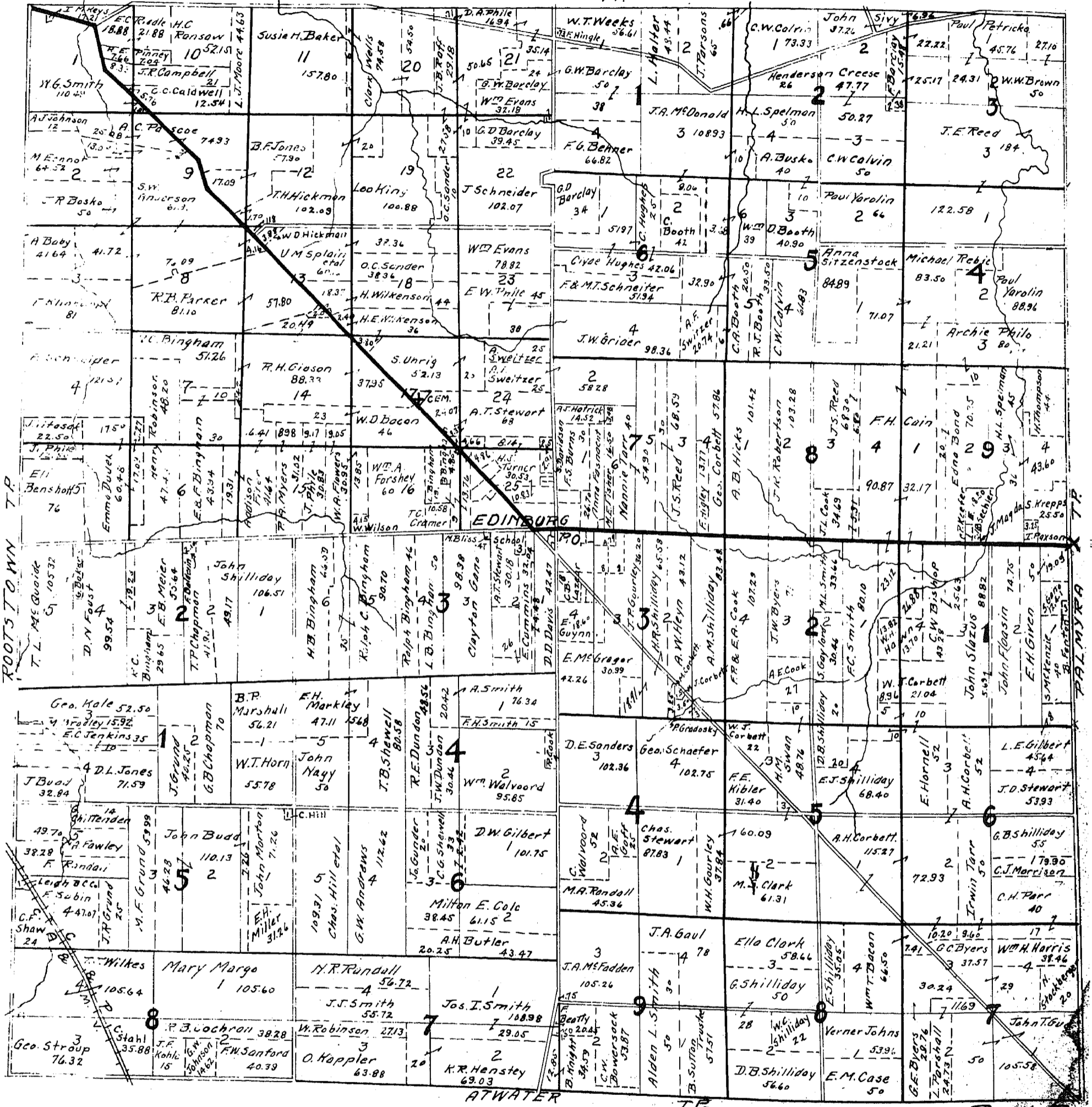
Nov. 1923

EDINBURG

T 2 N R 7 W

R. O. WHITACRE
SURVEYOR RAVENNA.

CHARLESTOWN TP.

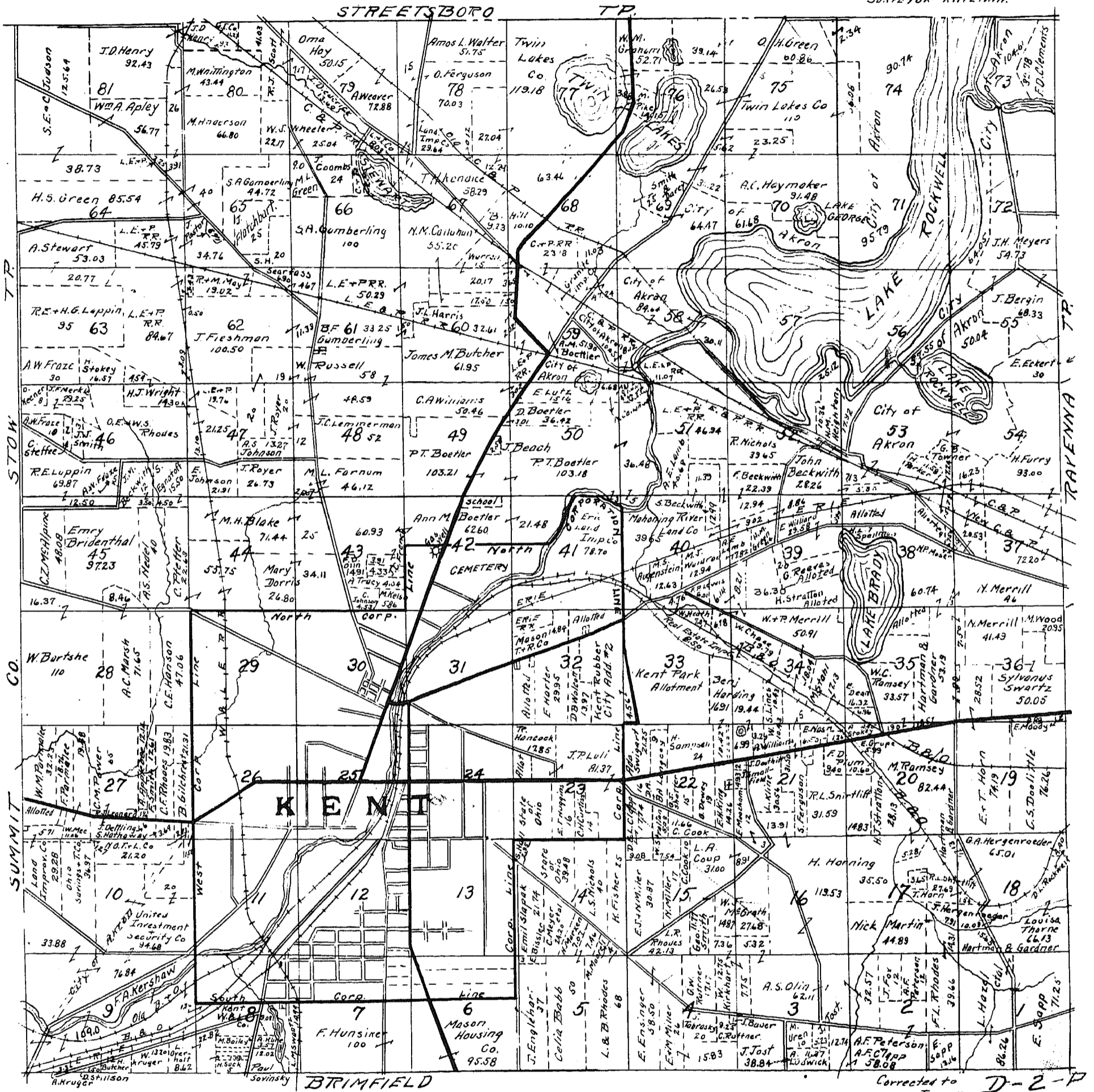


Corrected to 7/21 D-11-19
Dec. 1923

FRANKLIN

T3N R9W

F. O. WHITACRE
SURVEYOR TAYENNA.

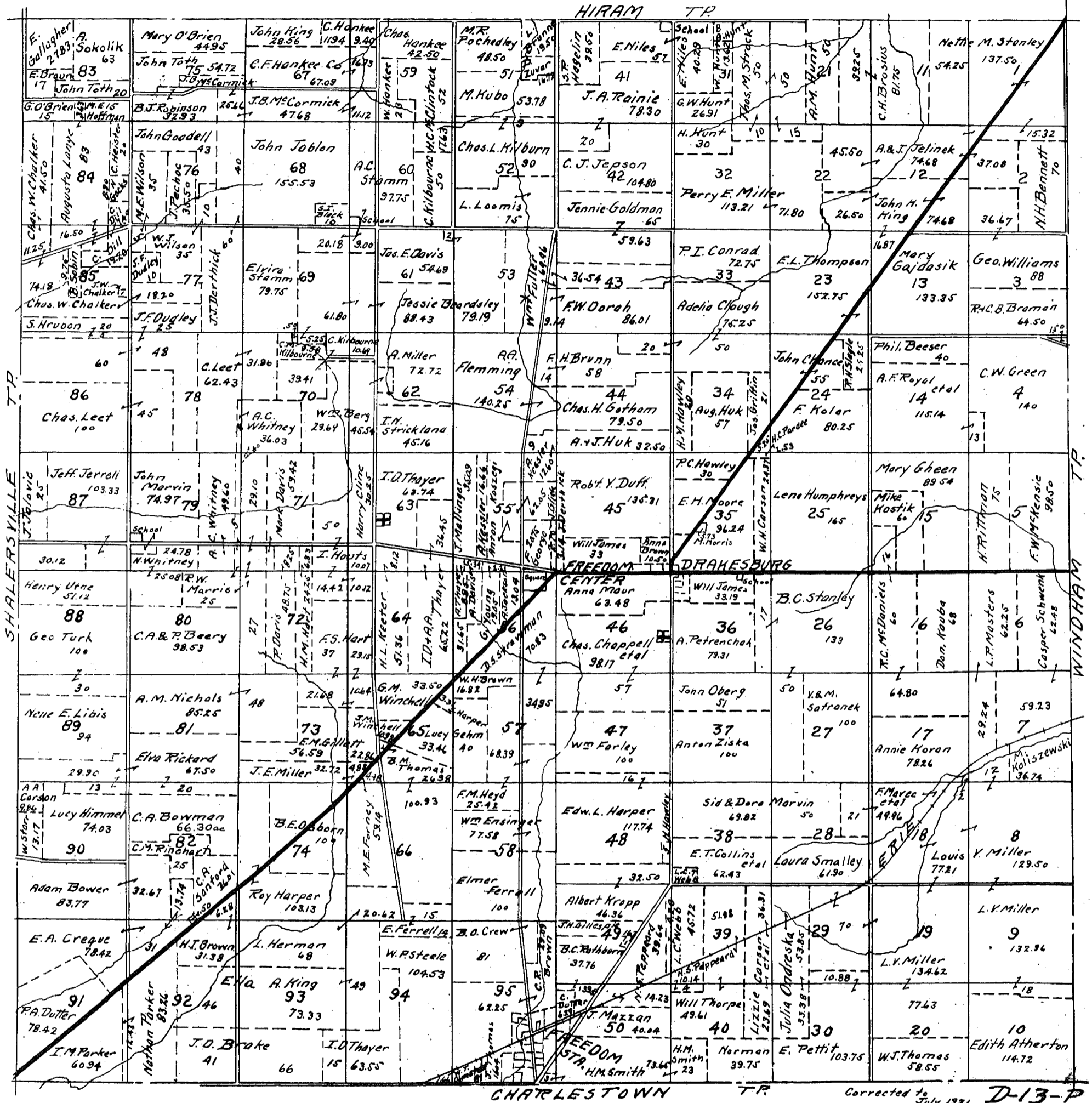


Corrected to D-2-P
June 1921
Feb 1924

FREEDOM

T4N R7W

R.O. WHITACRE
SURVEYOR TRAVENNA.

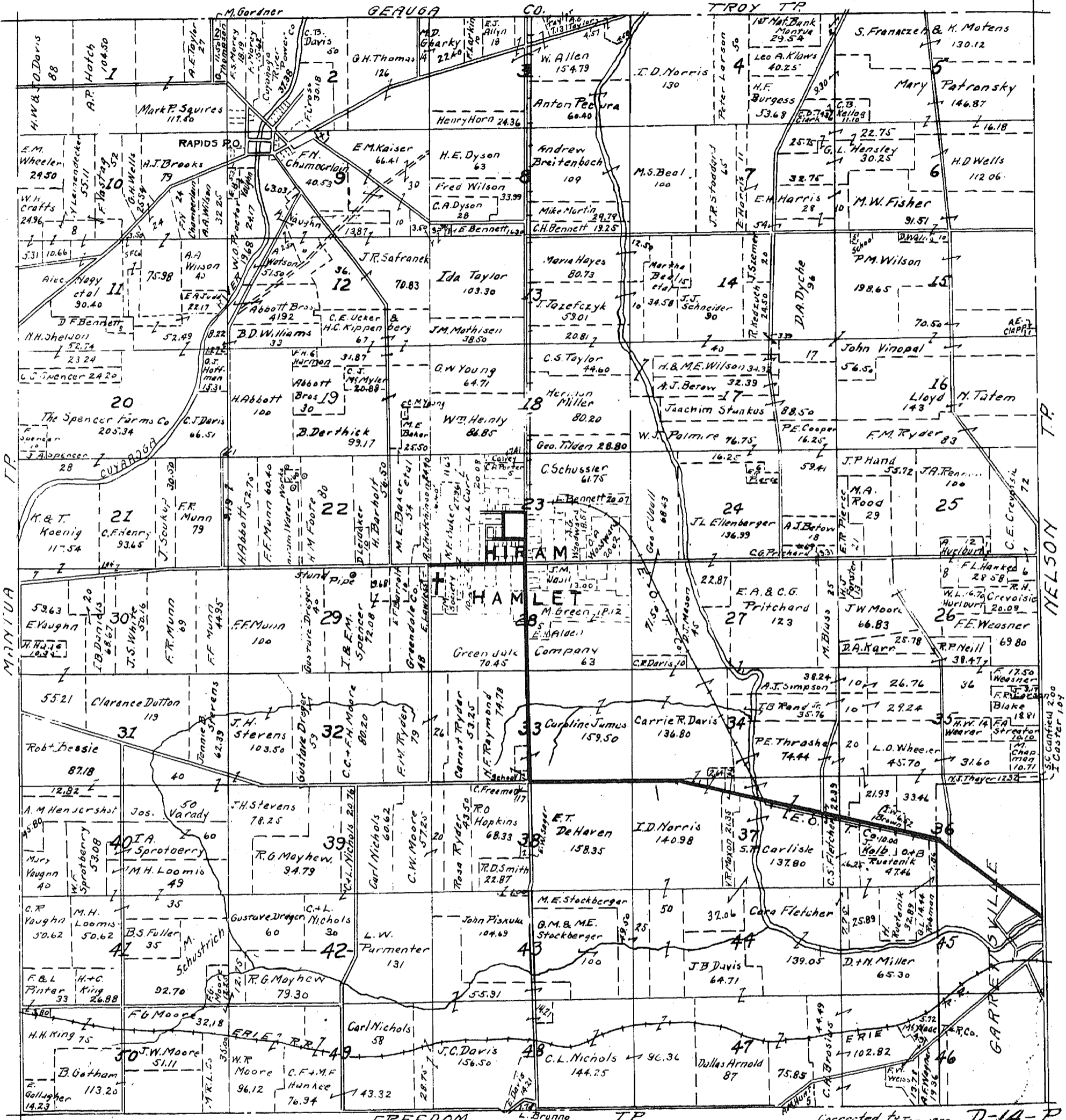


Corrected to July 1921
Dec 1923
D-13-P

HIRAM

T5N R7W

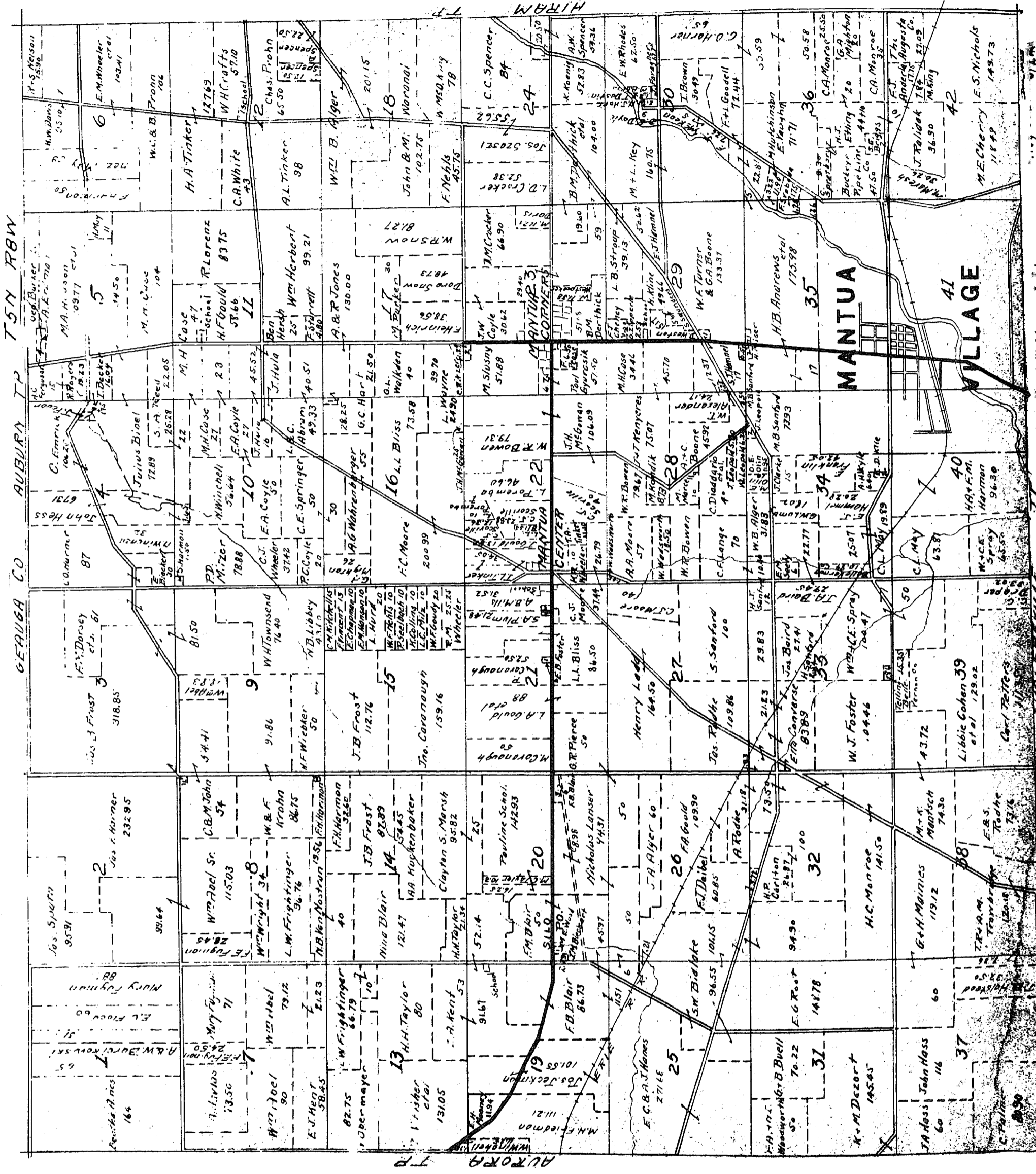
R.O. WHITACRE
SURVEYOR RAYENNA



Corrected to Jan. 1922
Dec. 1923
D-14-P

MANTUA

R.O. WHITACRE
SURVEYOR TAVENNA

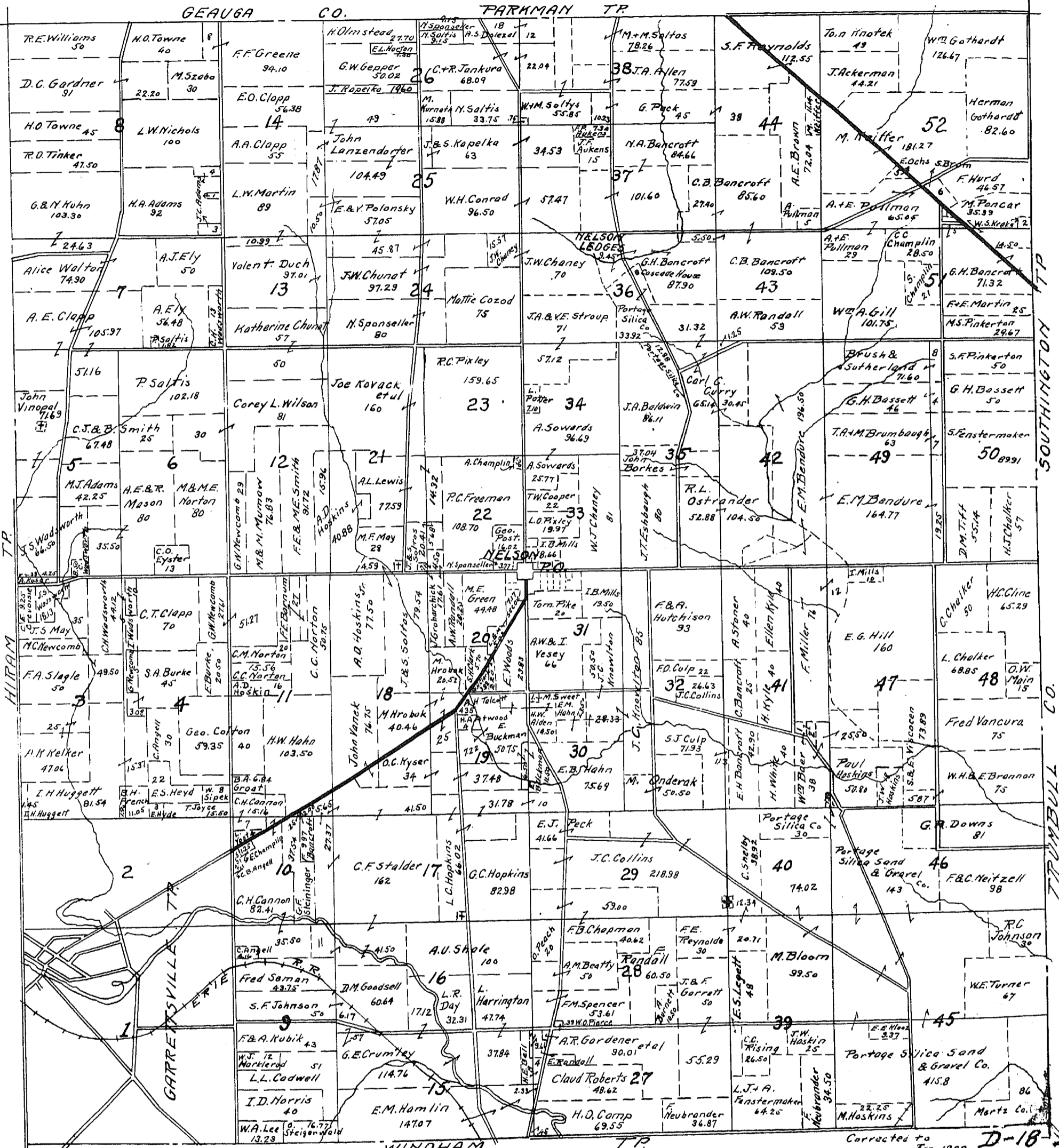


NELSON

T5N R6W

R.O. WHITACRE
SURVEYOR RAVENNA.

GEAUGA CO. PARKMAN TP



HIRAM TP

SOUTHINGTON TP

TRUMBULL CO.

WINDHAM TP

Corrected to
Jan 1922
Dec 1923
D-18

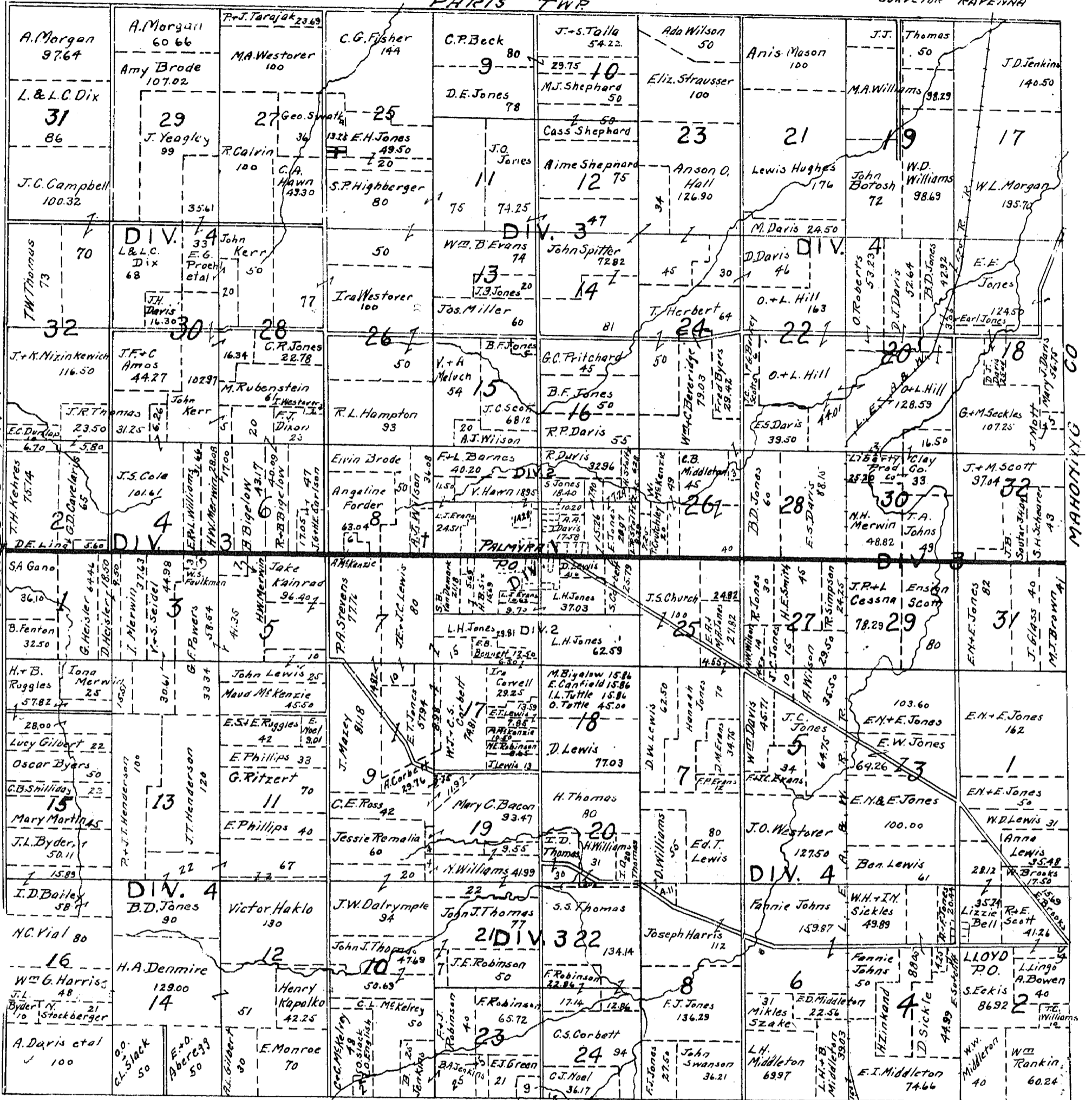
PALMYRA

T2N R6W

Scale 2 1/2" = 1 mile

PARIS TWP

R.O. WHITACRE
SURVEYOR TRAVENNA



C.S. Corbett Milt Bright DEERFIELD TWP Corrected to D-16-P
Feb 1922
Jan. 1924

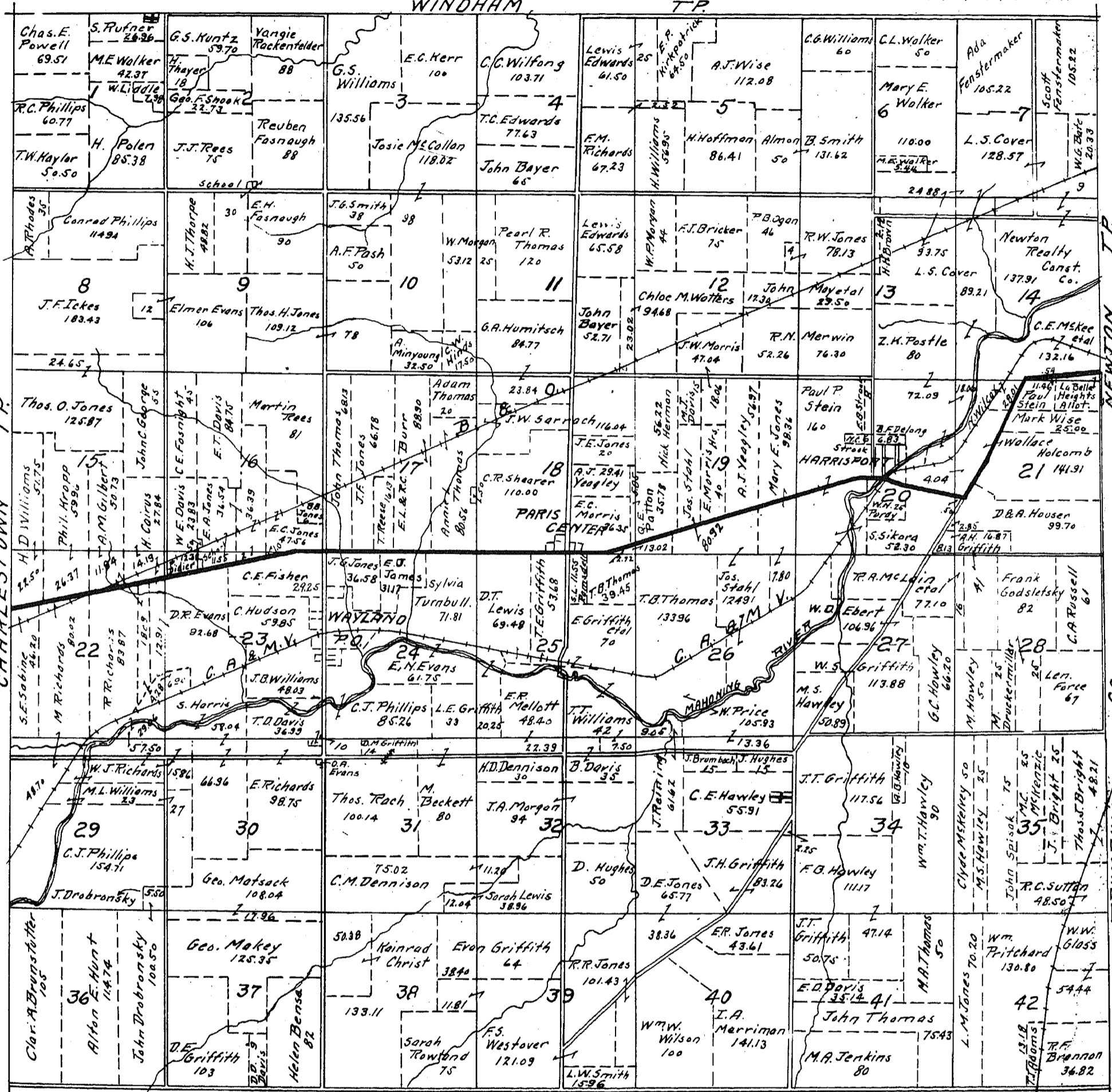
PARIS

T 3 N R 6 W

T.R. WHITACRE
SURVEYOR TAVENNA.

WINDHAM

TP

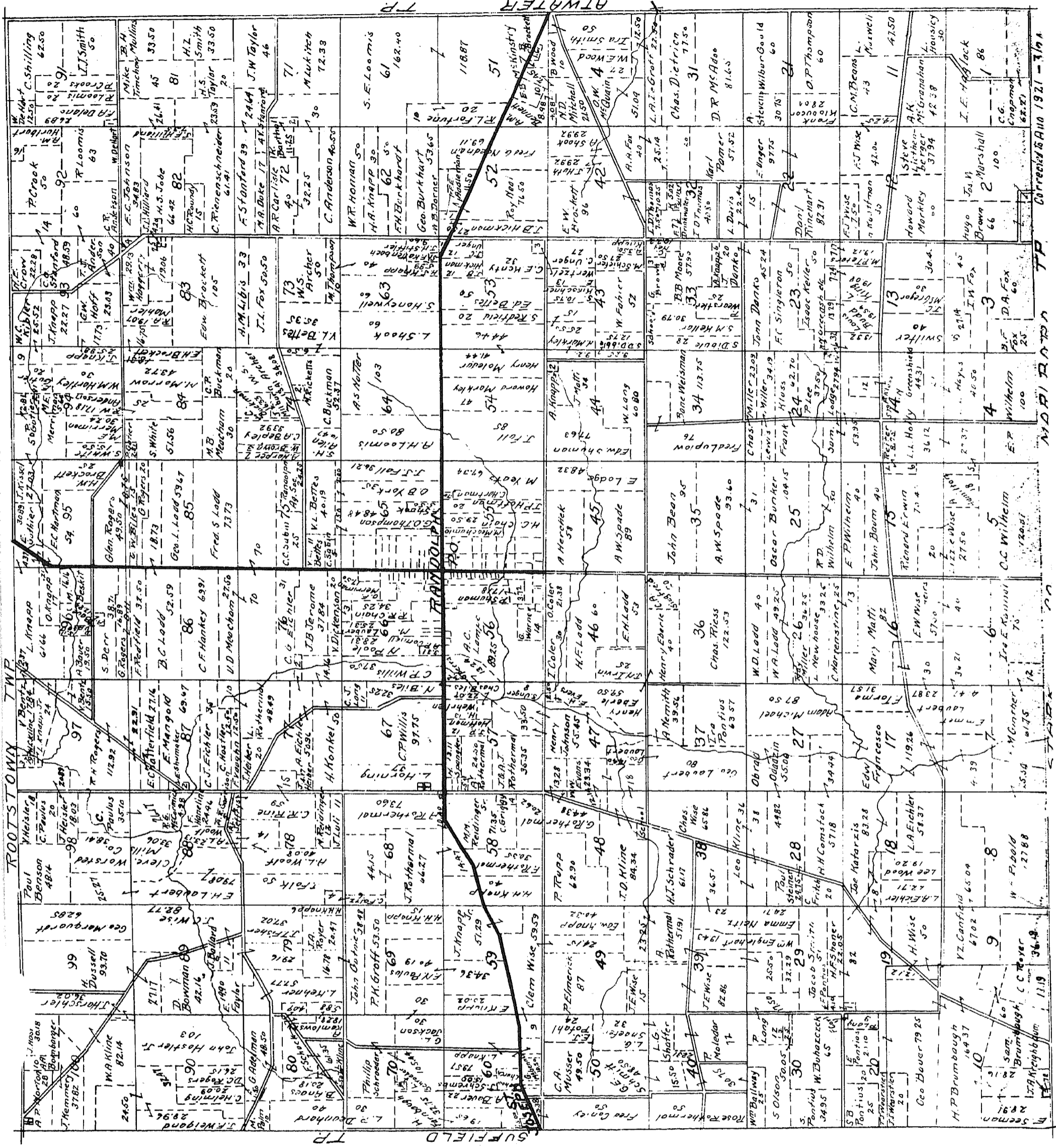


PALMYRA

TP

Corrected to Feb. 1922
to Nov. 1923. D-19-P

RANDOLPH



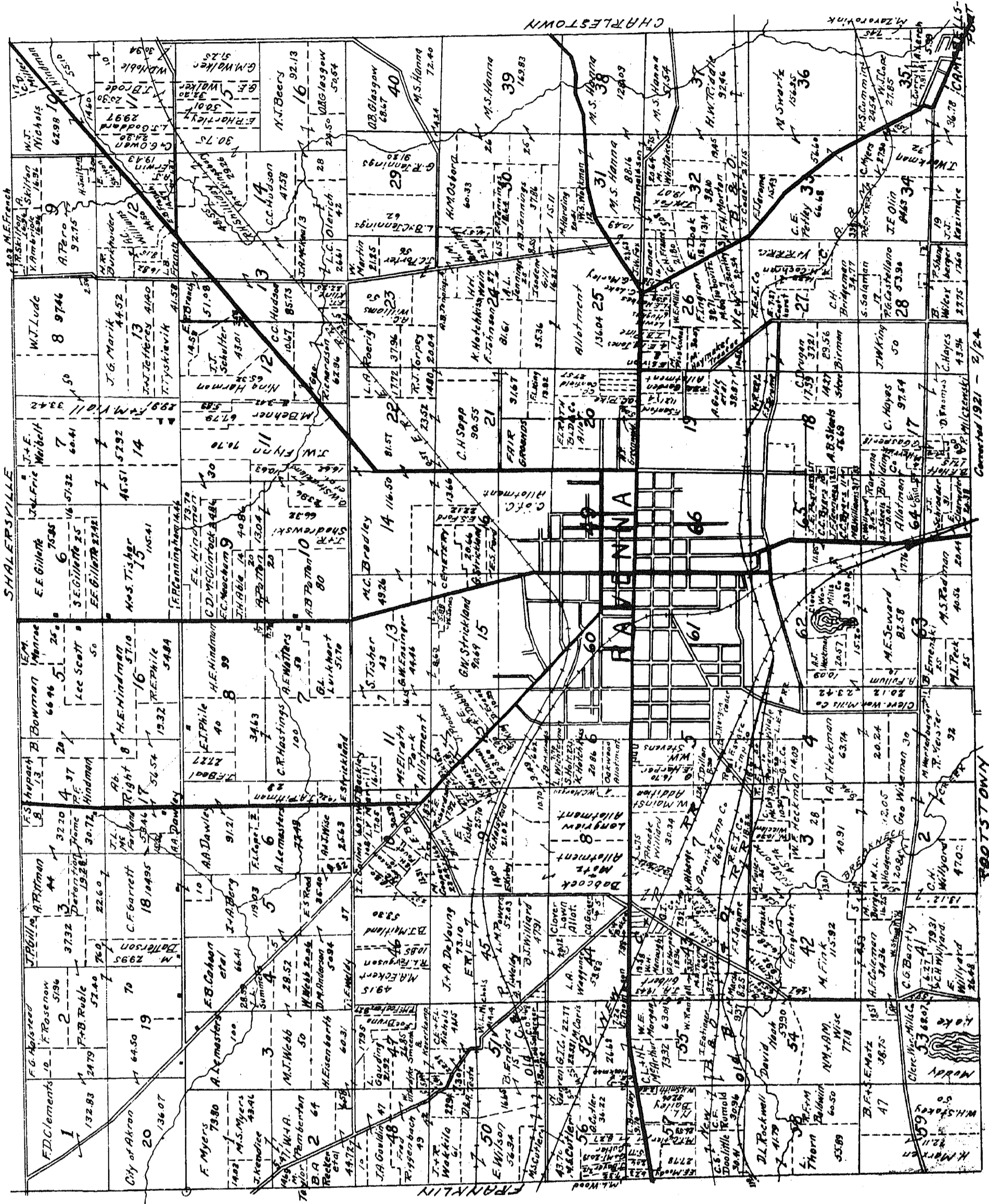
Corrected to June 1921 - 316A

MDR 12 1920

RAVENNA

RO. WHITACRE
SURVEYOR RAVENNA

T 31 N R 8 W

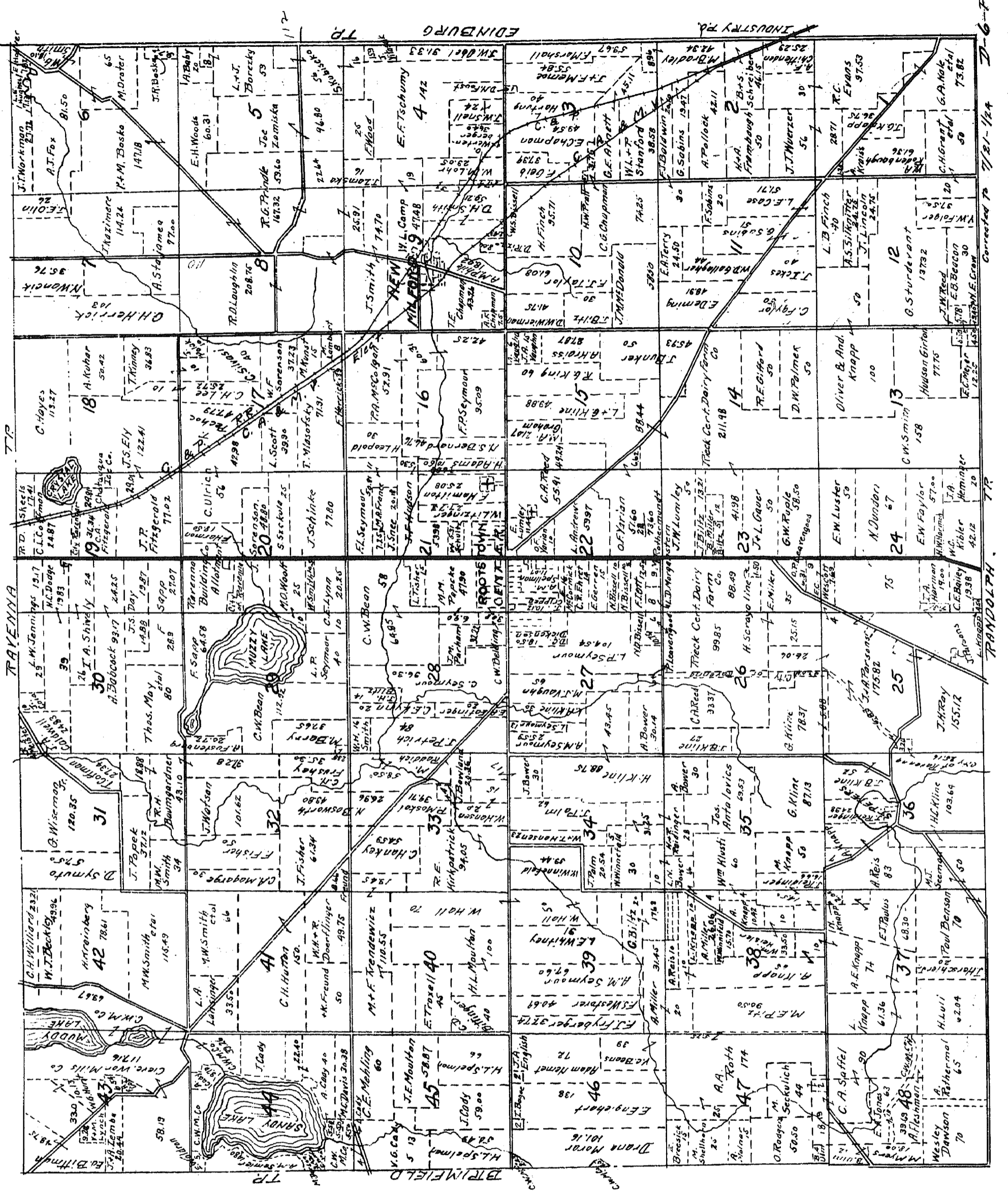


Corrected 1921 - 2/24

ROOTSTOWN

T.O. WHITACRE
SURVEYOR TAVENNA

T 2 N T 8 W



INDUSTRY RD.

EDINBURG TP.

TAVENNA TP.

BRIMFIELD TP.

RANDOLPH TP.

Corrected to 7/31/194

D-6-P

TAN BOW

K.O. WHITACRE

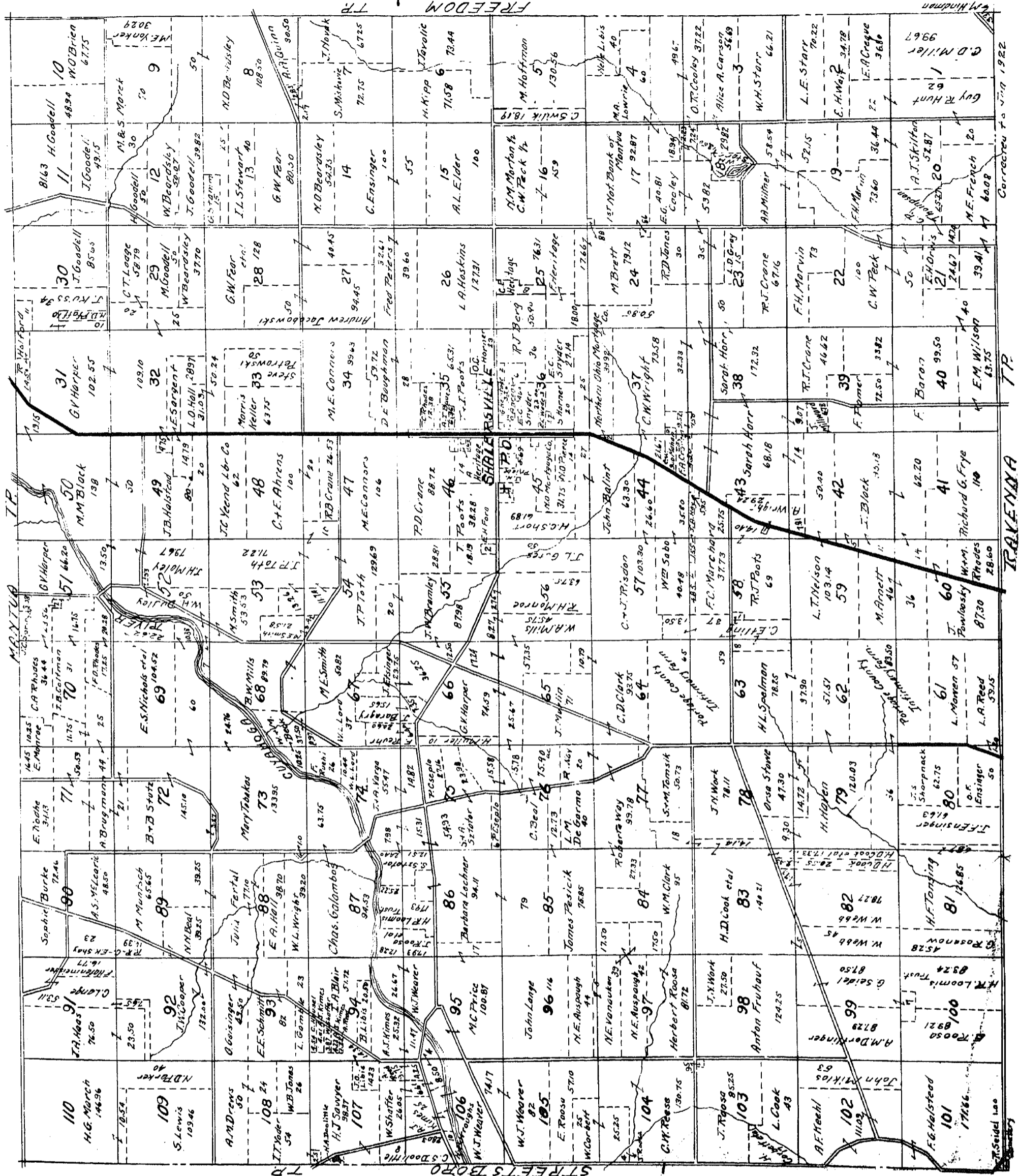
SHALERSVILLE

SURVEYOR

1411 110W

MAP 110

TR



Corrected to 1922

TR

TRAVENNA

TR

TR

TR

TR

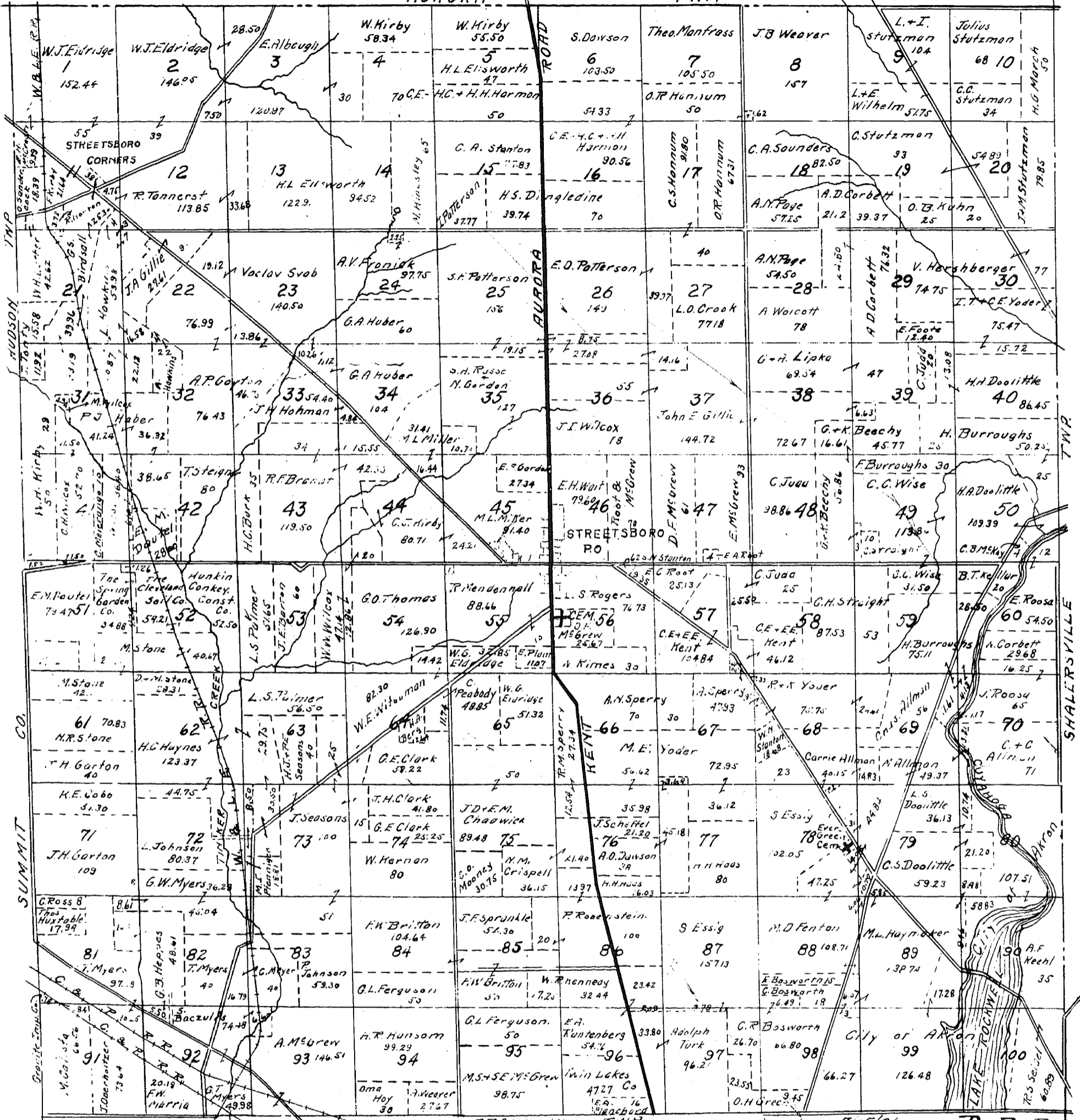
STREETSBORO

T4N R9W

R.O. WHITACRE
SURVEYOR TRAYENNA

AURORA

TWP.



FRANKLIN TWP.

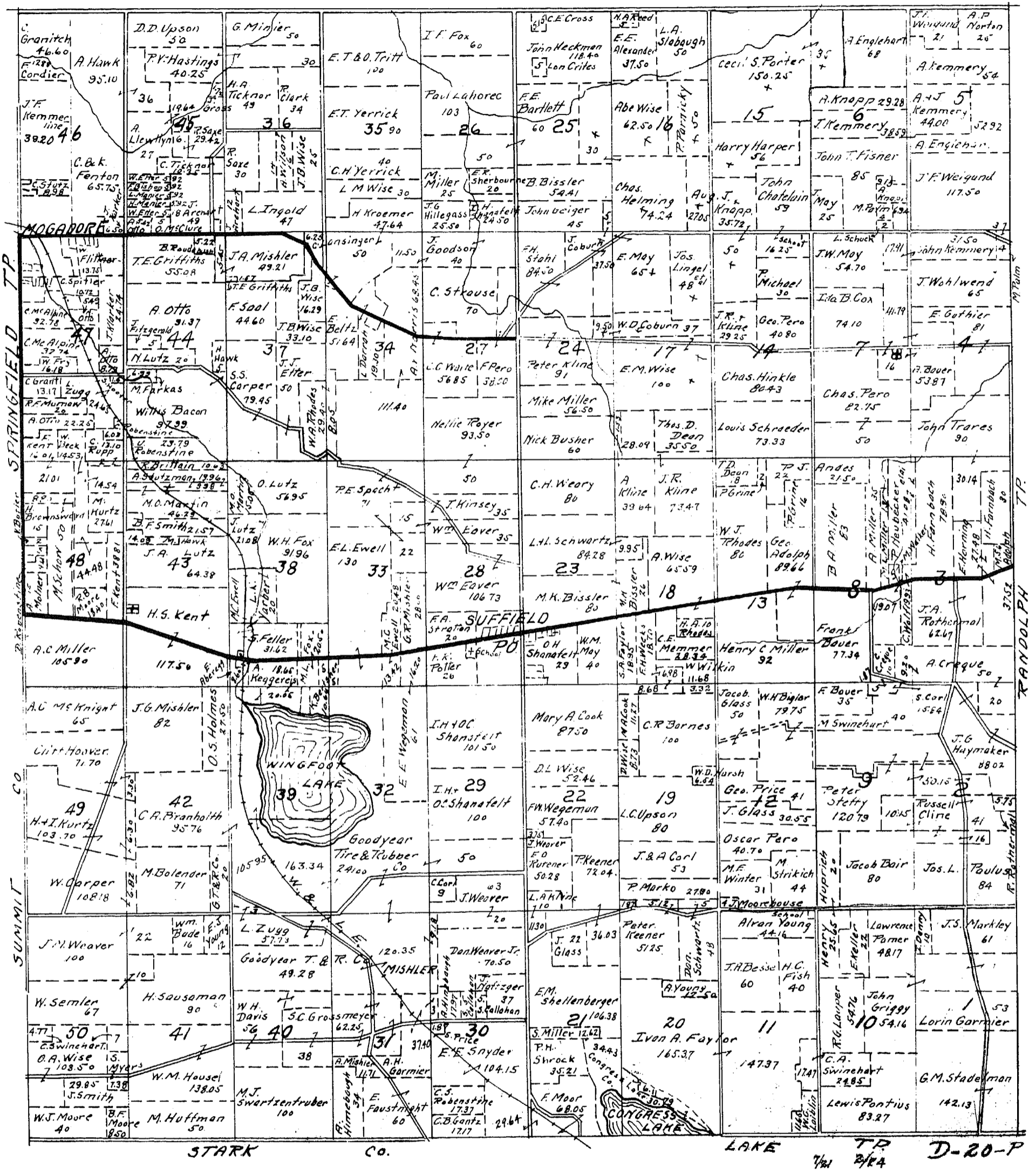
Corrected to 7/15/21
Jul-1922
Dec-1923

D-3-P

SUFFIELD

T1N R9W

R.O. WHITCRE
SURVEYOR - RAVENNA

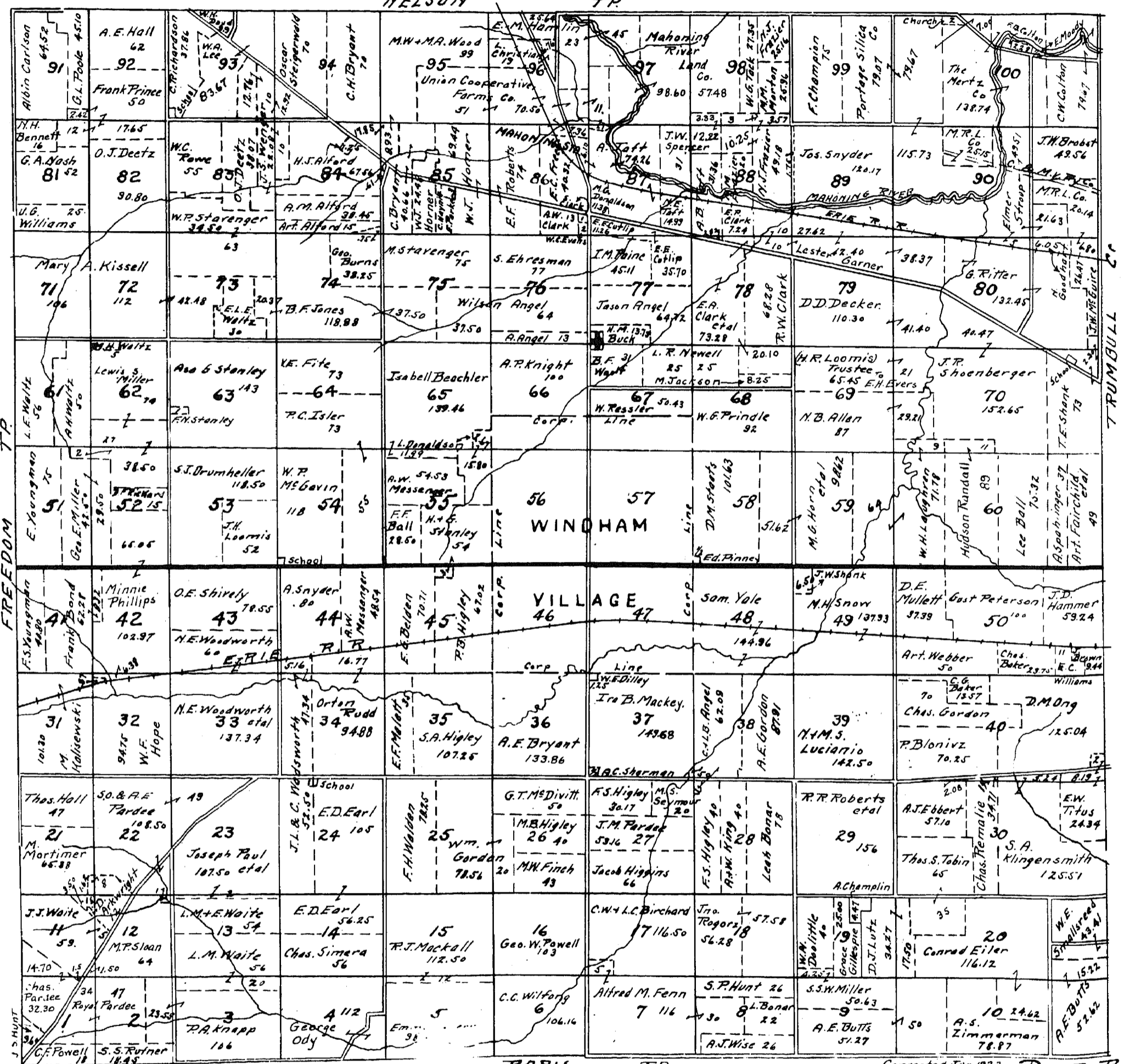


WINDHAM

T4N R6W

R.O. WHITACRE
SURVEYOR PAVENNA

NELSON TR.



PARIS TR.

Corrected Jun 1922
Nov 1923 D-17-P